

# 900 West Taft, Sapulpa, Okla.

## LOCATION

Three miles Southwest of downtown of Sapulpa  
 Adjacent to Wal-Mart Super Center (190,000 sqft.)  
 Across the street from the Sapulpa Golf Course  
 Trade area of approximatly 65,000 includes  
 Kellyville and Kiefer

## DEMOGRAPHICS

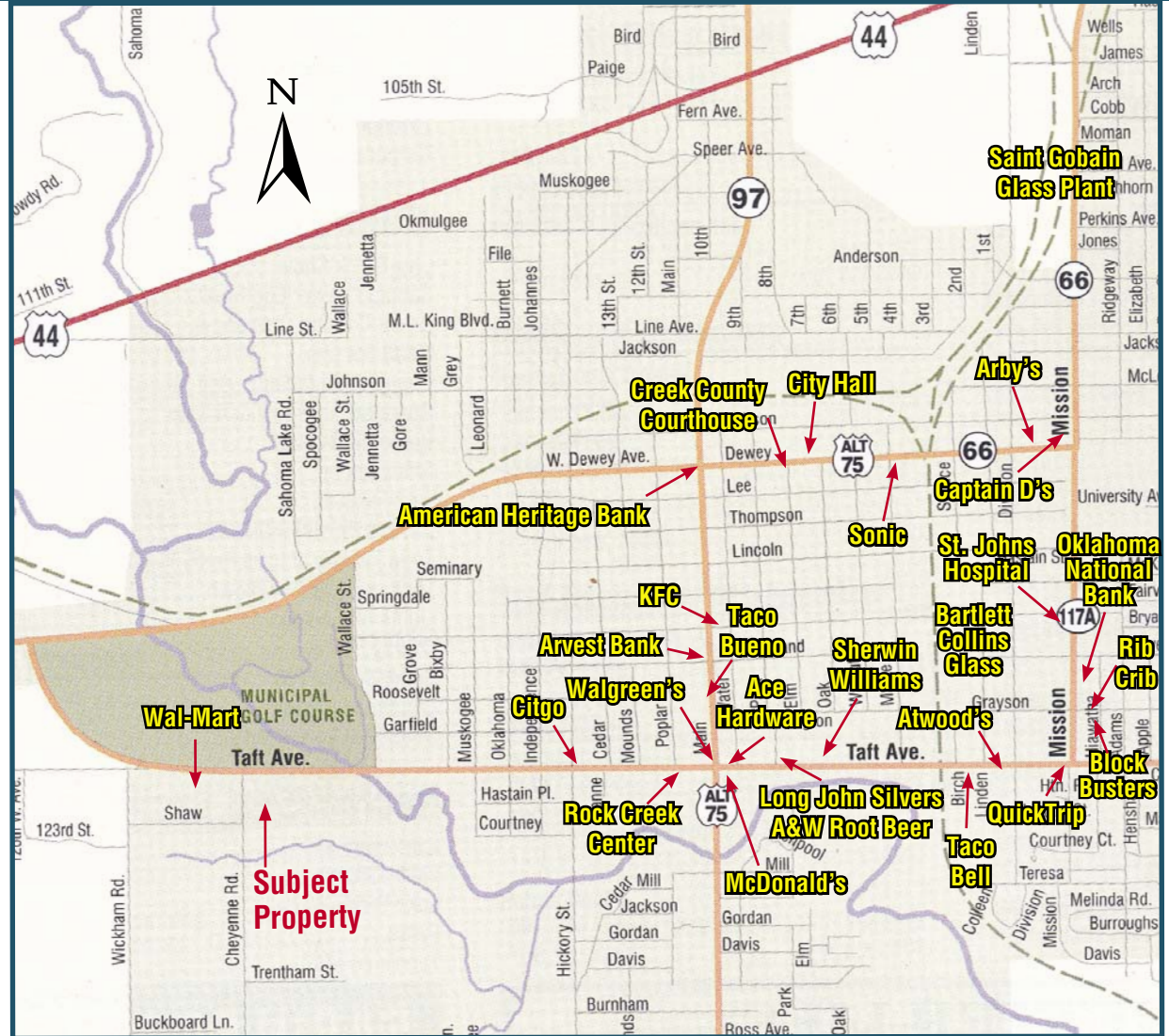
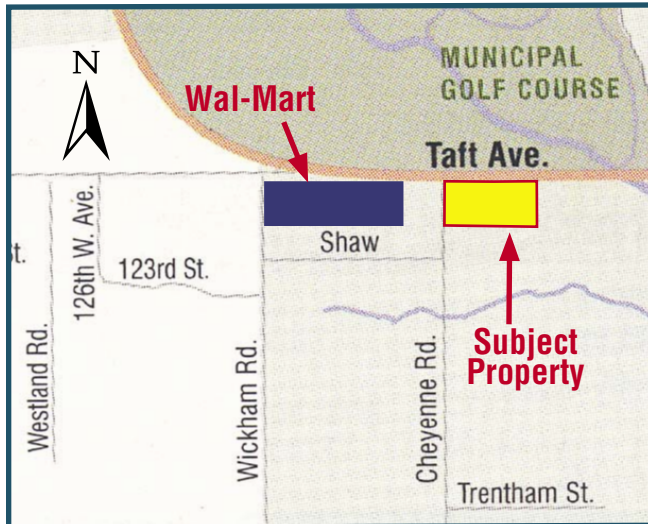
	1 mile	3 mile	5 mile
Population	9,223	26,478	39,632
Average Household Income	39,955	41,507	43,247

## THE PROPERTY

- Zoned CG
- 22.8 Acres
- 743 feet Fronting on West Taft (hwy 117)
- 1315 feet Cheyenne

## TRAFFIC COUNT

West Taft = 12,248



## BUSINESSES

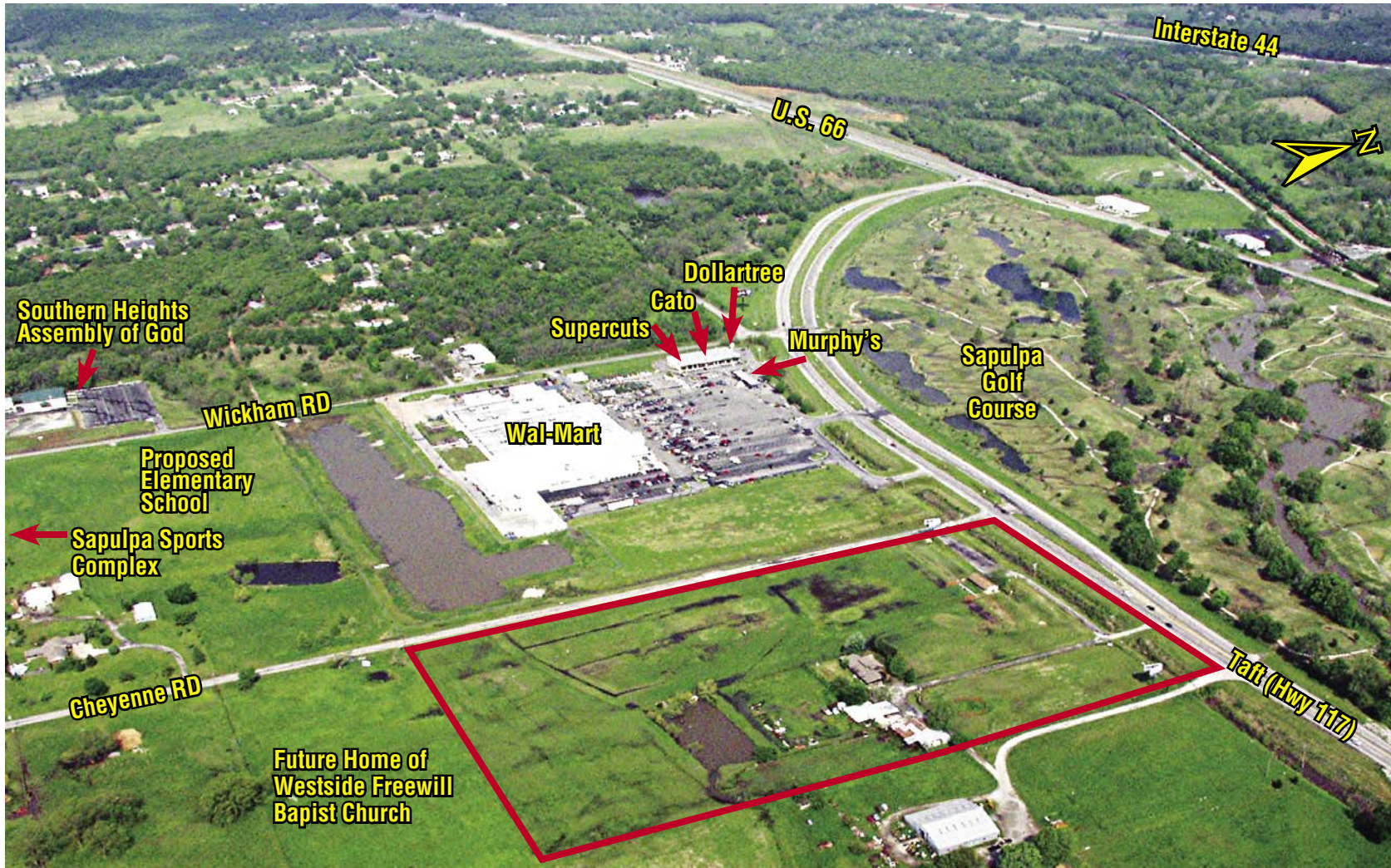
- |               |                    |
|---------------|--------------------|
| Arvest Bank   | McDonald's         |
| Murphy's      | Braum's            |
| Walgreen's    | Taco Bueno         |
| Citgo         | Long John Silver's |
| Dollar Tree   | Super Cuts         |
| Burger & More | Cato's             |
| West Lake Ace | First United Bank  |
| Hardware      |                    |

### Rock Creek Center

- |                         |                  |
|-------------------------|------------------|
| Stage                   | Radio Shack      |
| Pro-cuts                | Pro-Cuts         |
| Radio Shack             | Stage            |
| Sally's Beauty Supply   | Felt Shoes       |
| Farmers Insurance Group | TG&Y             |
| American Cash Advance   | China Buffet     |
| Beneficial Finance      | California Nails |
| Reasors                 |                  |



Voice 918.749.7966 • Fax 918.749.9701  
 P.O. Box 701116 • Tulsa, OK 74170-1116  
 Joe Adwon • jadwon@aol.com  
 Steve Collins • collinssw@prodigy.net



Voice 918.749.7966 • Fax 918.749.9701  
P.O. Box 701116 • Tulsa, OK 74170-1116  
Joe Adwon • jadwon@aol.com  
Steve Collins • collinssw@prodigy.net